



HL7 Australia

Web Services in Health Workshop

Presenter: **Ross Davey, CEO**
 ArgusConnect Ltd

A Model for Web Services Interoperability

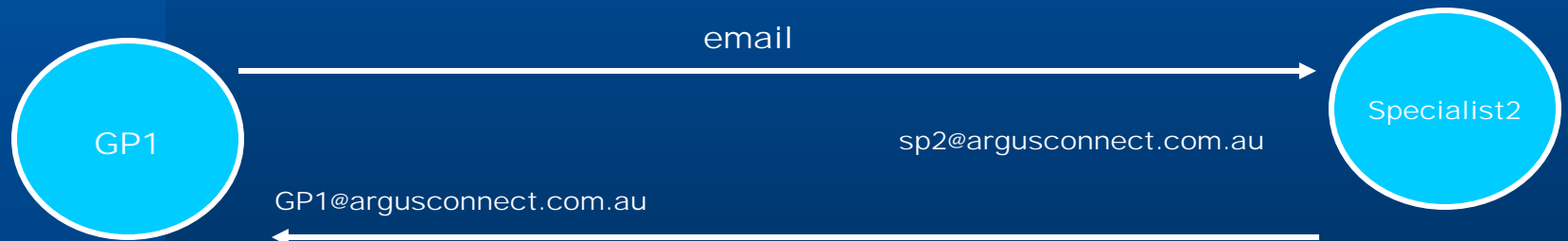
- ArgusConnect has undertaken scoping of potential of Web Service for its clients.
- Used input from stakeholders in pathology, GP, specialist, radiology and hospital settings.
- Looked for opportunities and pit-falls.
- Cannot abandon commitments to current user-base; i.e. must preserve SMTP/POP capabilities (at least for the short term)

Argus is based on a principle of 'no message intermediary':

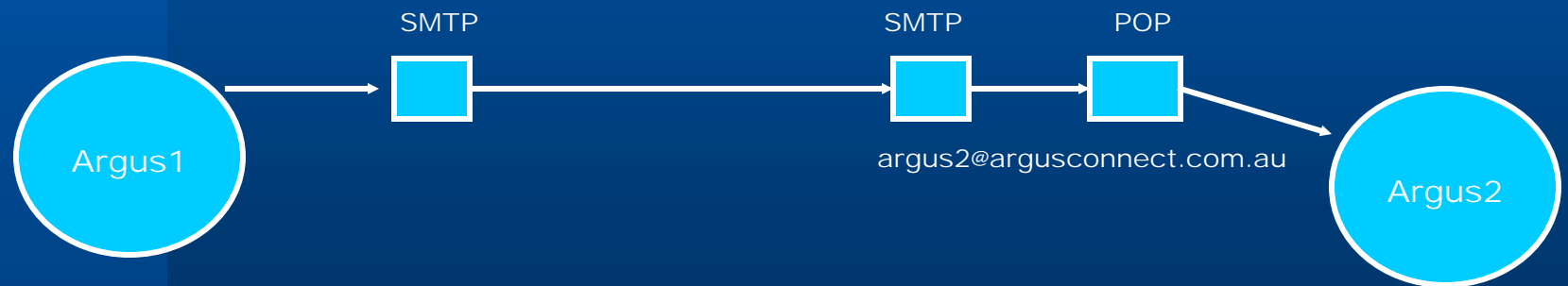
Such as:



Argus is essentially peer to peer messaging:



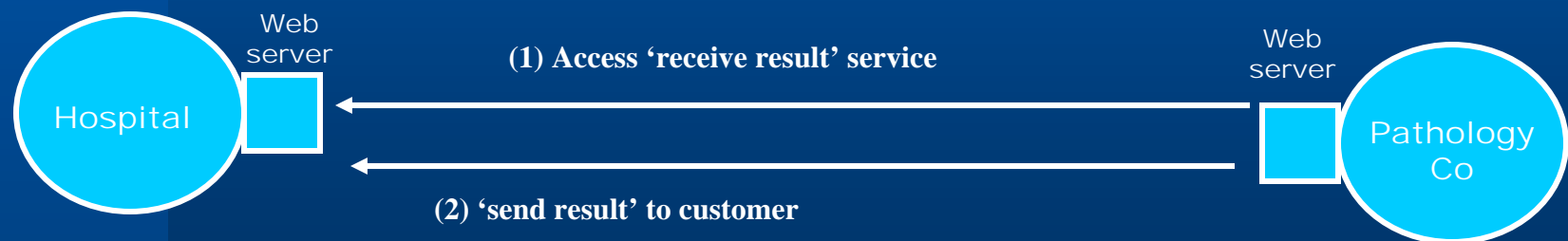
Which technically is really:



Some Argus stakeholders want to retain maximum peer-to-peer relationship

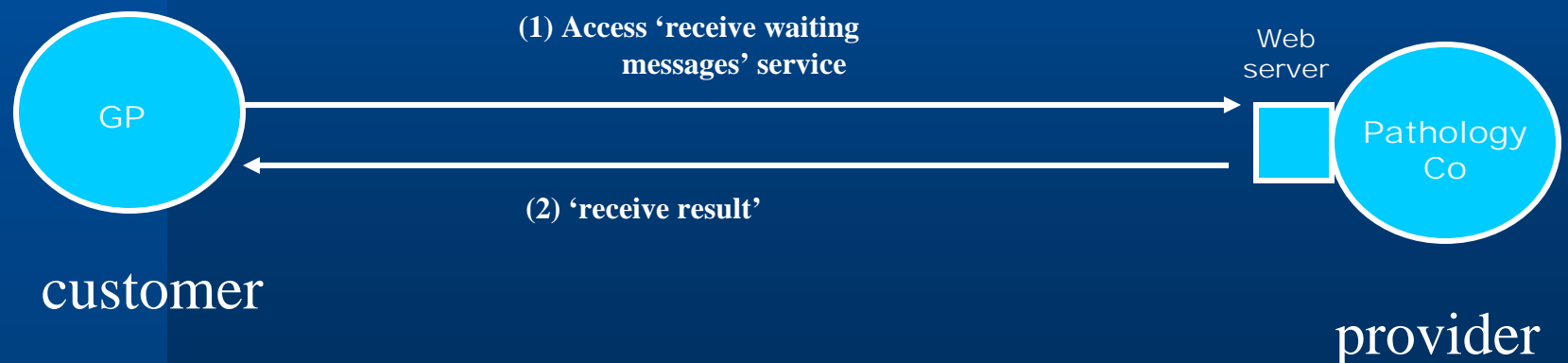
Peer to peer Web Services is OK for those with capacity:

- Both parties 'up all the time' internet connection
- Both parties have a 'web server'
- Ability to manage firewalls etc



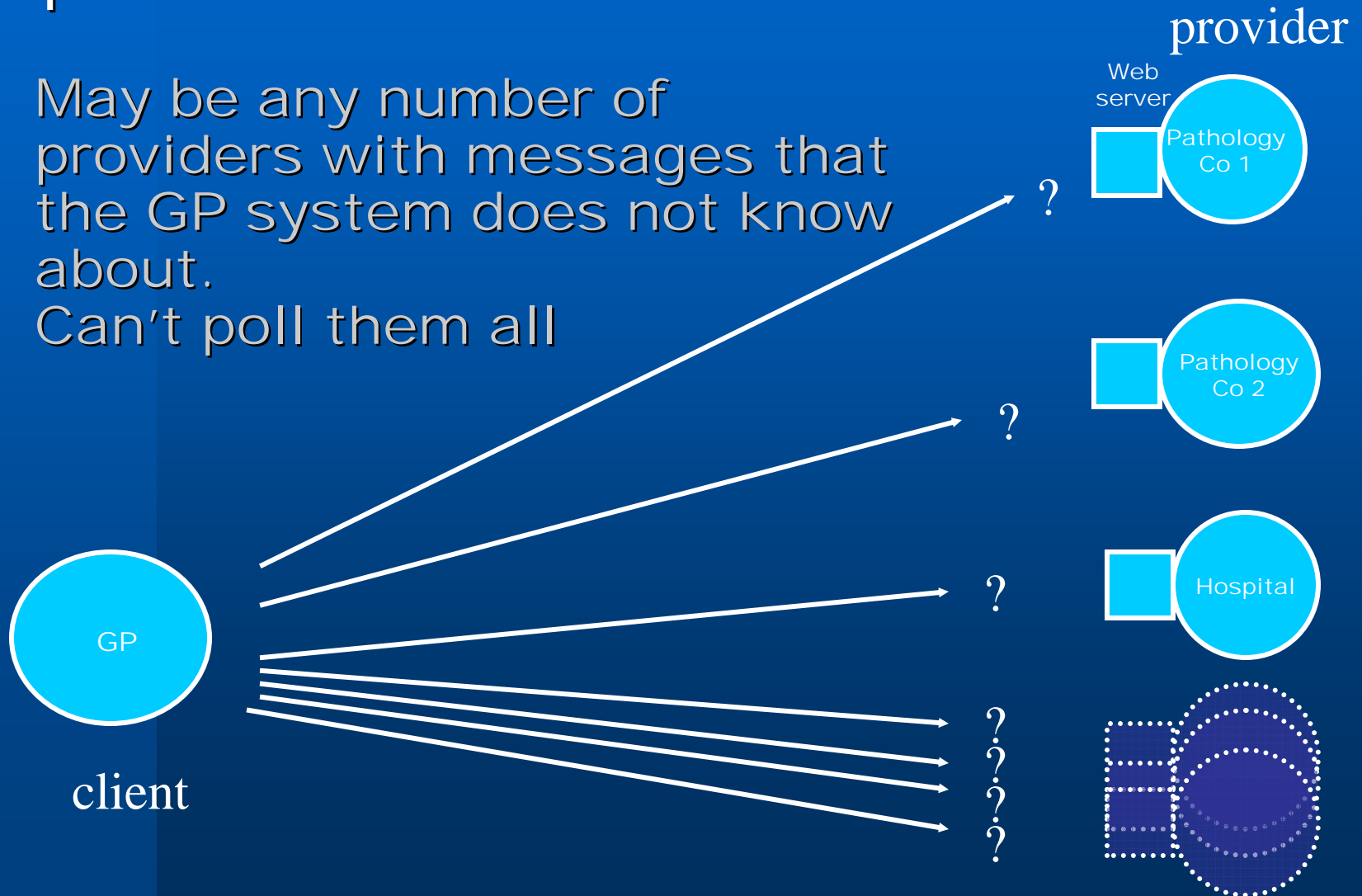
However, for those without a Web Server, traditional 'provider/customer' model must apply:

- Client accesses a web service from provider to request waiting messages.
- Receives waiting messages.



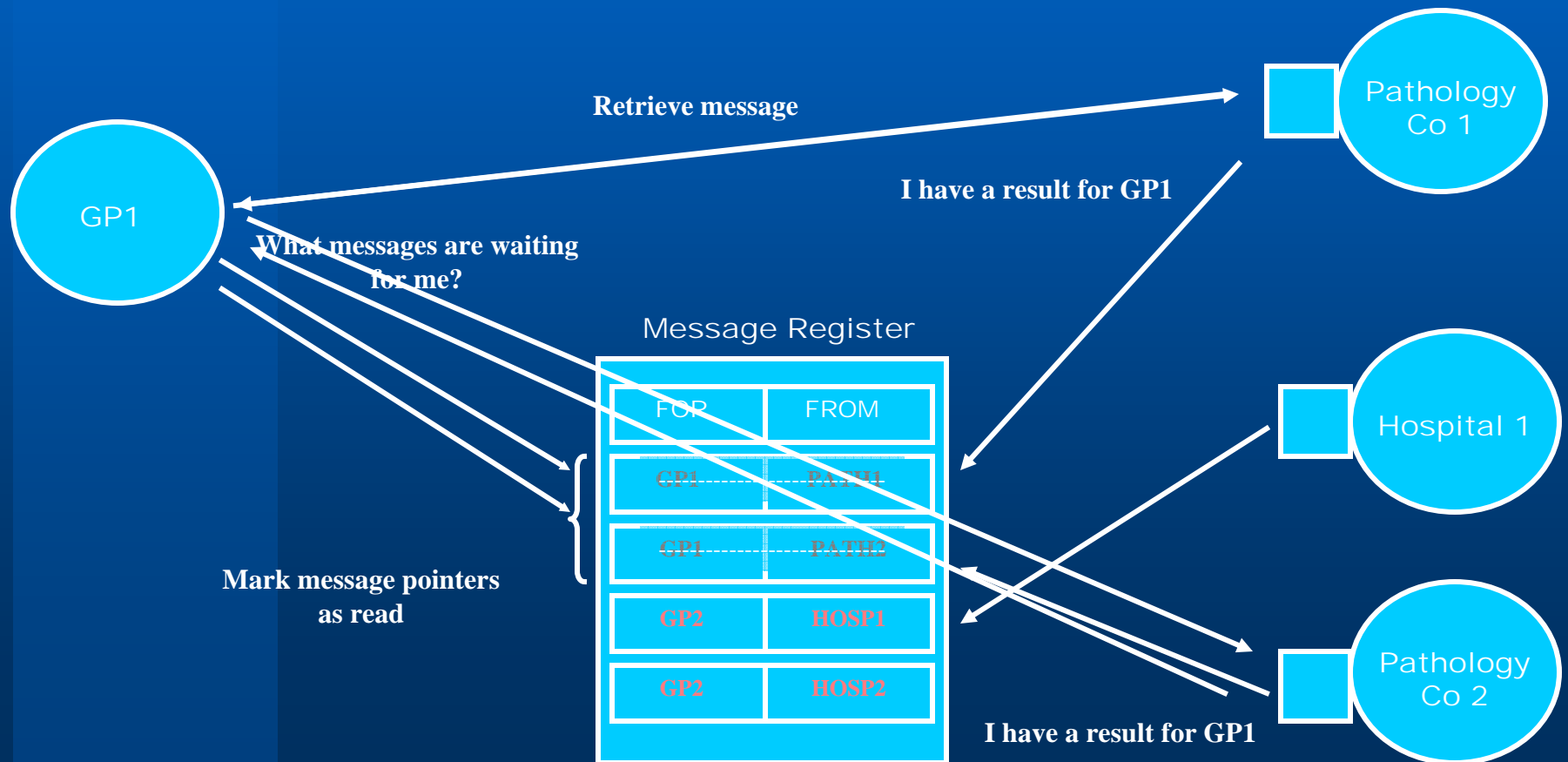
But from whom will the GP system request a service?

- May be any number of providers with messages that the GP system does not know about.
- Can't poll them all



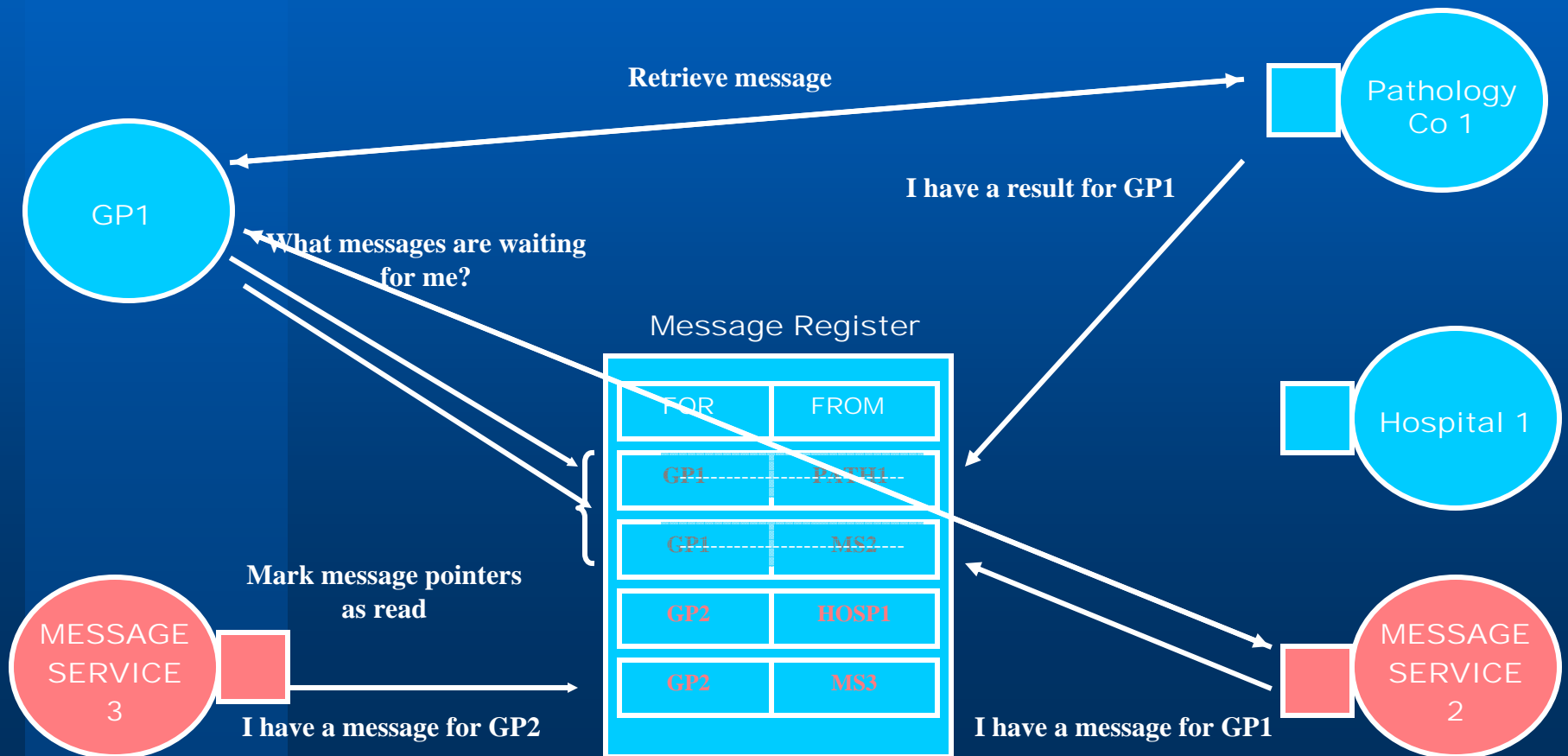
Proposal:

- A 'Message Register' that records who has messages waiting for whom.



Proposal:

- Opportunity for message provider interoperability



More Information

Ross Davey: CEO, ArgusConnect Ltd,
Greenhill Enterprise Centre
University Drive
Mt Helen 3350

Phone: 61 3 5335 2220

ross.d@argusconnect.com.au

Web site: www.argusconnect.com.au